



Progressive Time Based Nitrous Controller

Operation

The DYNOTUNE CONTROLLER operates the solenoids at 15hz. It has a 20 sec timeout. It can ramp up only. It can handle 40A continuous duty (**2 solenoids only**). It reads the switches only when it is powered on. After changing the settings you need to cycle power on/off. Blue LED is on (solid) when it is ramping. LED will flash if you have an invalid setting on the switches.

This unit is triggered by a grounding switch, either a WOT as in the Progressive drawing or using an.

Blue wire (12awg) – Solenoid ground

Black wire (12awg) – unit ground

White wire – unit 12v power (works with 9~18v)

Black wire – ground trigger wire. Unit starts when this wire is grounded!

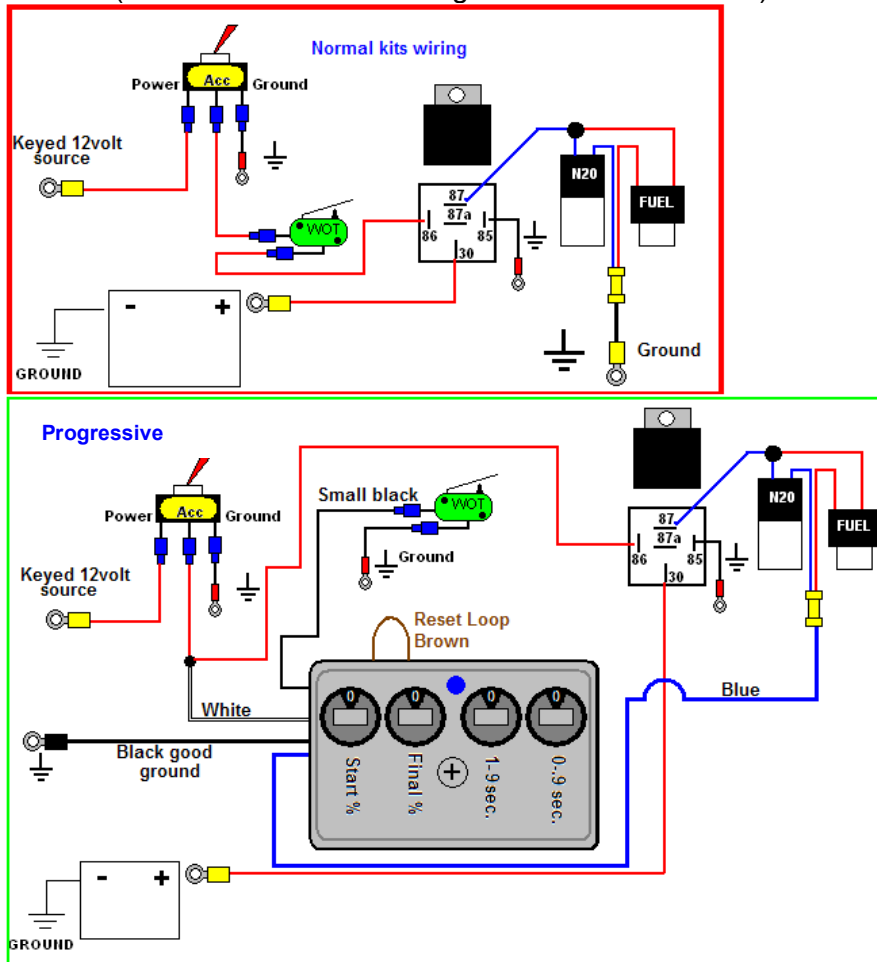
Brown wire – Reset wire. Not cutting the loop the Progressive box will reset or (restart) the ramp every time you lift off and press back down on the gas pedal. Cutting loop will turn the reset setting **ON**. This setting will allow you to lift off the gas pedal and press down again and the Progressive box will pick up the ramp where you lifted off at. To start over @ start % cycle arming power off then on. This is mostly used for clutch cars where you lift off the gas pedal while shifting.

Programming the DYNOTUNE CONTROLLER

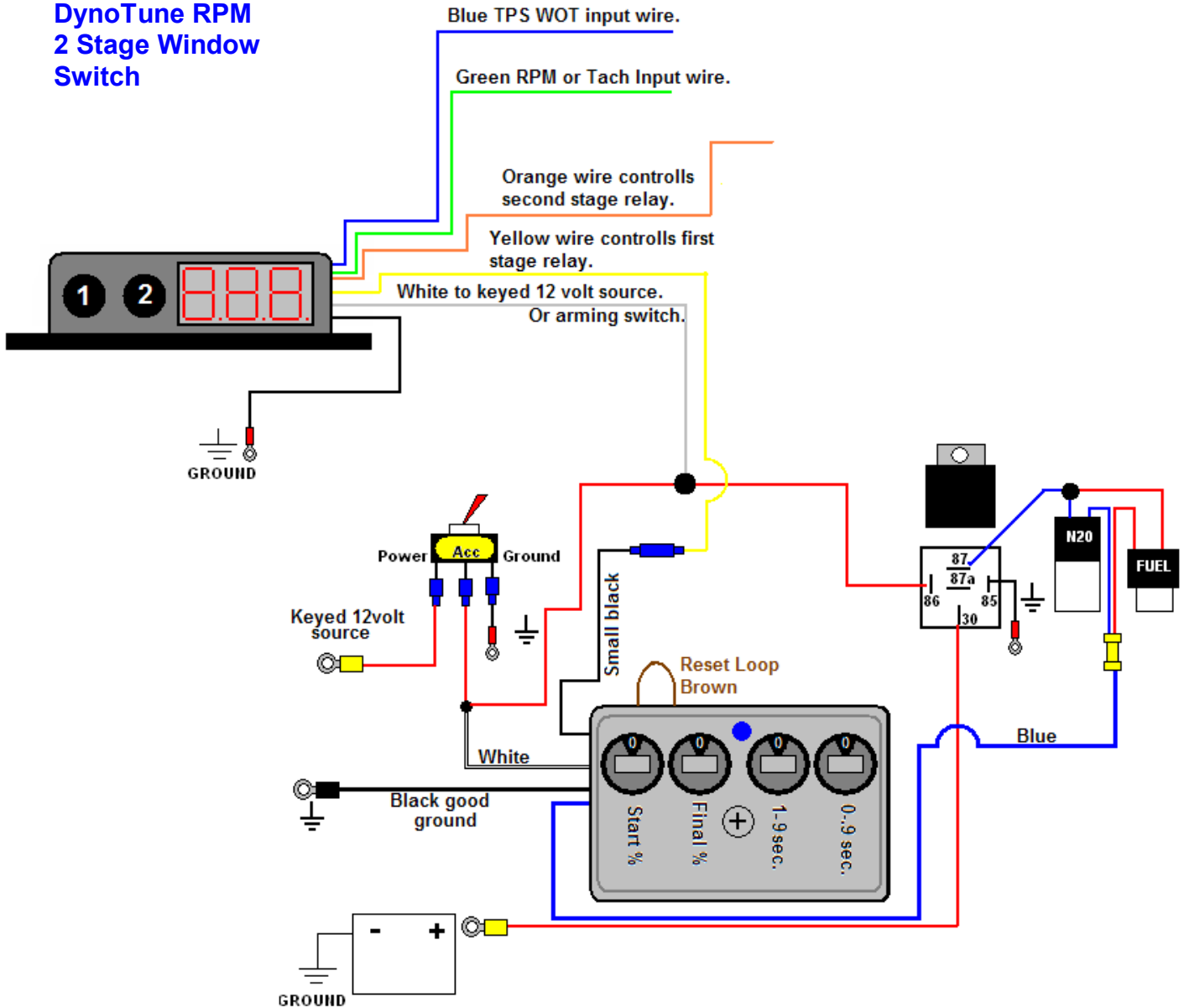
Start% 0=0 1=11 2=22 3=33 4=44 5=55 6=66 7=77 8=88 9=100

End% 0=0 1=11 2=22 3=33 4=44 5=55 6=66 7=77 8=88 9=100

build time 0 to 9.9 seconds (left dial is seconds and right dial is 1/10 seconds)



DynoTune RPM 2 Stage Window Switch



DynoTune Inc. may not be held responsible for any damages, how so ever caused, to any persons or equipment during the installation and or operation of this product. DynoTune Products are meant for OFF-ROAD use only, and make no claims as to this products ability to meet local safety or emissions laws.

WARRANTY:

DynoTune Inc. (DYNOTUNE INC.) warrants the material and workmanship of the equipment, components and parts manufactured by DYNOTUNE INC. against defects under normal use and service. This warranty shall extend for 90 days from the date of purchase. Prior to returning a product for warranty inspection, the customer must contact DYNOTUNE INC.'s instructions on troubleshooting prior to returning the controller.

DYNOTUNE INC. may at its option, repair or replace without cost for parts and labor, the defective product. This warranty does not cover finishes, normal wear and tear, nor does it cover damage resulting from accident, misuse, dirt, tampering, unreasonable use, service attempted or performed by unauthorized service agencies, ACTS of Devine intervention, failure to provide reasonable maintenance, or that have been modified or used for commercial reasons.

DYNOTUNE INC. specifically does not warrant equipment, parts or components purchased by any third party manufacturers or suppliers. Rather, for and defect equipment, parts and components purchased from third party manufacturers or suppliers, the customer shall have a recourse only to the terms of the warranty of that particular manufacturer or supplier. Any recommendations made by the third party manufacturer or suppliers concerning the use or application of their products are those of the manufacturer or suppliers, and DYNOTUNE INC. extends no warranty with respect to the results obtained for their use. DYNOTUNE INC. does not warranty those products in any way beyond the term of the warranty extended by the manufacturer or supplier.

The warranty provided above, DYNOTUNE INC.'s obligations and liabilities hereafter, and the rights and remedies of the customer are exclusive and is substitution for, and the customer waives all other warranties, guarantees, obligations, liabilities, rights and remedies, expressed or implied, arising by law or otherwise, including (without limitation) the implied warranties of merchantability or fitness or purpose, and any obligations or liability or DYNOTUNE INC. arising from tort, or loss of use, revenue or profit, or the incidental or consequential damage.